



Navigating Primary Immunodeficiency: Community Health Partner Series

Over six million people are affected by primary immunodeficiencies (PIs), among which 70 to 90% remain undiagnosed. Individuals with undiagnosed PI are at increased risk for recurrent infections, cancers, and autoimmune diseases. Many diagnosed with PI struggle to navigate complex health systems.

That is why Project ECHO at Penn State College of Medicine and the Immune Deficiency Foundation (IDF) are launching a virtual series to help prepare key health partners to best serve the PI community. This series is open to community health workers, patient navigators, school nurses and those serving the larger PI community. The curriculum will provide an overview of up-to-date evidence-based recommendations, resources, and guidelines for patients with PI.

Register for this no-cost educational series at: <https://redcap.link/PICommunity>



Series Schedule

Sessions will take place bi-weekly from 12-1 p.m. EST on the following dates:

Oct. 2, 2023	Oct. 30, 2023	Nov. 27, 2023
Oct. 16, 2023	Nov. 13, 2023	Dec. 4, 2023

This no-cost ECHO series will cover topics such as:

- Living Your Best Life
- Navigating Health Systems
- Mental Health/Caregiver Fatigue
- Employment with PI
- Treatment Options
- Transitioning Care: Pediatrics to Adults

Flip to learn more 

Contact us.
echo@psu.edu



PennState
College of Medicine



“All Teach, All Learn”

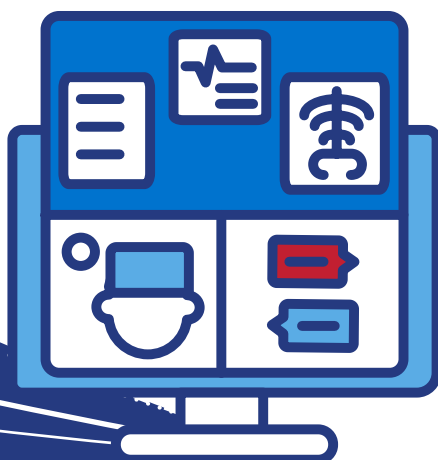
The Project ECHO model of continuing education leverages the power of all participants learning and sharing together. ECHO sessions consist of a group discussion on experiences and questions submitted by participants followed by a brief flash talk with Q&A. As such, it is a guided, virtual learning community aimed at preparing key health partners to serve the PI community.

PARTICIPATING IS FREE, SIMPLE AND VIRTUAL.

- Register for the series at no cost, and get reminders for upcoming sessions.
- Submit experiences and questions when you can (and if you want) using easy-to-complete fillable web forms.
- Join sessions using the Zoom video conferencing platform with links that are emailed to you.
- No need to travel. Participation takes just one hour of your work day.

BENEFITS FROM PARTICIPATION

- A learning community of providers like you.
- Short presentations from subject matter experts.
- Suggestions on managing care challenges.



What to Expect

- Experts dedicated to sharing knowledge with you and learning from you
- A welcoming atmosphere where people feel comfortable participating
- Responsiveness to your feedback on evaluations
- Respect for your experiences, skills and time
- Increased knowledge

Project ECHO

Project ECHO (Extension for Community Healthcare Outcomes) is an internationally-recognized, evidence-based approach to continuing education and tele-mentoring that leverages the power of sharing knowledge across miles and across disciplines. Project ECHO started at Penn State College of Medicine in 2018 and aims to improve health outcomes and access to care within and beyond Pennsylvania.

