



Understanding Primary Immunodeficiency

REGISTER FOR THIS NO-COST, CME-ELIGIBLE EDUCATIONAL SERIES

Over six million people are affected by primary immunodeficiencies (PIs), among which 70 to 90% remain undiagnosed. PI patients with undiagnosed PIs are at increased risk for recurrent infections, cancers, and autoimmune diseases.

That is why Project ECHO at Penn State College of Medicine and the Immune Deficiency Foundation (IDF) are launching a virtual series to help providers recognize the signs of PI and the appropriate and timely steps to diagnosis. This series will also provide an overview up-to-date evidence-based treatment recommendations and guidelines for patients with PI.

Register for this series at: <https://redcap.link/PrimaryImmunodeficiency>



Series Schedule

Sessions will take place bi-weekly from 12-1 p.m. EST on the following dates:

Mar. 13, 2023	Apr. 10, 2023	May 8, 2023	Jun. 5, 2023	Jul. 10, 2023
Mar. 27, 2023	Apr. 24, 2023	May 22, 2023	Jun. 26, 2023	Jul. 24, 2023

This no-cost CME-eligible ECHO series will cover topics such as:

- Immune System Basics
- Signs and Symptoms
- Diagnosing
- Communication Best Practices
- Treatments
- Addressing Social Determinants
- Antibody Deficiencies
- Comorbidities

Contact us.
echo@psu.edu



PennState
College of Medicine

Flip to learn more



“All Teach, All Learn”

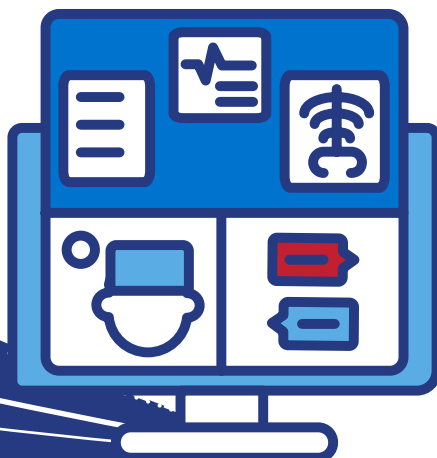
The Project ECHO model of continuing education leverages the power of all participants learning and sharing together. ECHO sessions consist of a group discussion on de-identified patient cases submitted by participants as well as a brief flash talk with Q&A. As such, it is a guided, virtual learning community aimed at supporting healthcare providers in diagnosing and treating patients with PIs.

PARTICIPATING IS FREE, SIMPLE AND VIRTUAL.

- Register for the series at no cost, and get reminders for upcoming sessions.
- Submit patient cases when you can (and if you want) using easy-to-complete fillable web forms.
- Join sessions using the Zoom video conferencing platform with links that are emailed to you.
- No need to travel. Participation takes just one hour of your work day.

BENEFITS FROM PARTICIPATION

- A learning community of providers like you.
- Short presentations from subject matter experts.
- Suggestions on managing your most complex patients.
- Free continuing education credits you can use to maintain your certifications.



What to Expect

- Experts dedicated to sharing knowledge with you and learning from you
- A welcoming atmosphere where people feel comfortable participating
- Responsiveness to your feedback on evaluations
- Respect for your experiences, skills and time
- Increased knowledge

Project ECHO

Project ECHO (Extension for Community Healthcare Outcomes) is an internationally-recognized, evidence-based approach to continuing education and tele-mentoring that leverages the power of sharing knowledge across miles and across disciplines. Project ECHO started at Penn State College of Medicine in 2018 and aims to improve health outcomes and access to care within and beyond Pennsylvania.



PennState
College of Medicine

